



Professional
Web Developers
& Software Engineers

Creators of  **PYRAMID**
DEALER MANAGEMENT SYSTEM



PYRAMID

DEALER MANAGEMENT SYSTEM

Introduction

True Track Software is proud to launch Pyramid-DMS, a cloud based fully integrated Dealer Management System consisting of Vehicle Management, Workshop Management, Accounting, Stock Control, Order Processing & Marketing. Developed specifically for and with the expertise of the motorcycle dealer community, Pyramid-DMS brings together a complete suite of modules dedicated to managing every aspect of a motorcycle dealership. Pyramid-DMS helps to run an efficient dealership by helping store, manage and manipulate all of the data Associated with selling new and used motorcycles and motorcycle parts. The system is cloud based and runs on remote servers accessed through standard web browsers. This means there are no up-front costs for in-house servers and no ongoing hardware maintenance costs. The software runs remotely so you don't have to install anything, and because of this you can run it from any location, on most devices including tablets and phones.

Auto Trader Uploads Order Processing
eBay Integration Website Integration
Workshop Vehicle Sales
Management Reports
Stock Control Accounting
Marketing / CRM MCN Uploads

Vehicle Sales

Pyramid Vehicle Management controls all your vehicle sales requirements and can list your vehicles onto a number of sales platforms. You can view your stock easily and get up to date information of what a vehicle owes you with the workshop expenses automatically updating the vehicle stock. Our comprehensive vehicle order book system will produce a sales order and subsequent invoice from the straight sale of a vehicle through to vehicle sold on finance with multiple part exchanges. Integration with eBay, Auto Trader, Motorcycle City News and your website is a crucial part of our system. True Track have invested heavily in this area to develop separate model applications for each of these sales platforms, and you can upload your vehicle stock overnight with a much higher success rate over our competitors.

Workshop Management

Pyramid Workshop Management does exactly what it says on the tin, manages the workshop. Any information related to work carried out is centralised here. Log the job type, the date it started and finished, the job description, service & MOT date and any other information that may be useful to store for future use. It deals with Retail, Internal, Warranty & Insurance work. You can plan the work using the diary and scheduling system, raise an invoice for the work carried out and log information related to any warranty all in one place.

Order Management

Order management is an important area of running an efficient dealership. Pyramid DMS manages the sales and purchase orders and has stock back-ordering facilities with automatic links to your website and eBay.

Stock Control

Pyramid Stock Management ensures your stock control runs smoothly and efficiently. All of the common facilities are included; products, categories, re-ordering, stock purchases, adjustments and history; a stock-take facility along with invoicing, credits and orders. A powerful function is the ability to run various stock reports so you actually know your current stock situation instead of an approximate vague idea.

Accounting

Pyramid Accounting is a full accounting module that completely integrates with all the modules in Pyramid to ensure your accounting is up to date and in real-time. It consists of a sales, purchase and nominal ledger that produces a profit and loss, a balance sheet and a trial balance. It also features a bank reconciliation, nominal history and journal entry posting program.

Marketing

Pyramid Marketing offers full CRM and marketing features including SMS texting, bulk emailing, sales enquiry logging, diary & appointment functions & integration with your web site for sales leads.

Workshop Management

The Pyramid DMS Workshop Management module has everything you need to run a busy workshop including a great diary planning system and a handy MOT & Service reminder system that automatically reminds you to contact customers 12 months after they MOT'd their Vehicle - a great example of intelligent prospecting. The system also handles Retail, Internal & Warranty work with third party links to MotoGB's warranty system. This system links with stock control and back-ordering to ensure parts needed to complete jobs are ordered.

Select	Job No.	Type	Status	Account Name	Vehicle	Reg	Job Value	Scheduled
<input type="checkbox"/>	35	RET	NEW	peter tracey	YAMAHA XPS00		0.00	05/08/2012
<input type="checkbox"/>	34	RET	FIN	Internal New Bike...			85.98	03/08/2012
<input type="checkbox"/>	33	RET	FIN	Internal New Bike...	HONDA CBR600		44.95	03/08/2012
<input type="checkbox"/>	32	RET	FIN	TRACEY GREEN			44.95	29/06/2012
<input type="checkbox"/>	31	WARR	FIN	KAWASAKI WARR...	HONDA R1	XV608TH	94.95	15/06/2012
<input type="checkbox"/>	30	WARR	FIN	KAWASAKI WARR...	HONDA CBR600	FET3 KEV	94.95	15/06/2012
<input type="checkbox"/>	29	RET	FIN	Internal New Bike...			44.95	13/06/2012
<input type="checkbox"/>	14	RET	FIN	Internal New Bike...	HONDA R1	XV608TH	85.98	12/06/2012
<input type="checkbox"/>	10	RET	FIN	Internal New Bike...			134.97	12/06/2012
<input type="checkbox"/>	28	RET	FIN	peter tracey	HONDA R1	XV608TH	94.95	12/06/2012
<input type="checkbox"/>	27	RET	FIN	Internal New Bike...	HONDA R1	XV608TH	44.95	11/06/2012
<input type="checkbox"/>	26	RET	FIN	Internal New Bike...	HONDA R1	XV608TH	179.98	11/06/2012
<input type="checkbox"/>	25	RET	FIN	Internal New Bike...	HONDA R1	XV608TH	44.95	11/06/2012
<input type="checkbox"/>	24	RET	FIN	Kevin Munday			44.95	11/06/2012
<input type="checkbox"/>	23	RET	FIN	Daniel O'Leary			44.95	11/06/2012

Workshop Jobs

Create workshop jobs easily with the workshop module. All the information involved with logging work on a bike - including customer, job description, job type, scheduled date, time and due dates. You can add parts and labour and backorder parts to your parts department with a single click. By using a Workshop Job system in this way planning a new job is very quick and ensures the projects runs smoothly.

Internal, Warranty, Insurance & Estimates

Create Retail, Internal, Warranty, Insurance & Workshop Estimates easily and efficiently with our workshop management system. The system takes care of non-taxable insurance and warranty work and books the cost of internal work as a direct expense against the sale vehicle that are being prepared in the workshop.

Diary

The workshop diary is a visual outlook of the scheduled workload ahead. You can select daily, weekly or monthly views, edit jobs, change dates and send SMS contact texts to your customers.

Rate Description	Retail	Cost	Sales Centre	VAT Code	Category
RETAIL	45.00	28.00	4000 *	A *	Retail *
WARRANTY	30.00	28.00	4000 *	B *	Warranty *
INTERNAL	25.00	28.00	4000 *	B *	Internal *
DFA	20.00	28.00	4000 *	B *	DFA *

Reporting

Reports are a key management tool and enable you to provide an evidence base for your planning. If your workshop is not performing as you would like but you are having difficulty identifying the problem, the reporting features are invaluable in tracing the root cause, and crucially they are your evidence when implementing the solution. Pyramid-DMS comes with a selection reporting functions including Work in Progress, Invoiced Profit Summary, Invoiced Labour Summary & Technician efficiency.

Key Features

- Workshop Jobs
- Retail, Internal, Warranty and Insurance Work
- Workshop Estimates
- MOT and Service Reminders
- Workshop Diary with Daily, Weekly and Monthly View
- Labour Efficiency Reporting
- Workshop Labour/Part Sales Reporting

Accounting

Pyramid-DMS Accounting contains all the necessary modules to control every aspect of your business accounting. It is a comprehensive but simple double-entry booking system that any staff member will easily get to grips with. The system can export to other accounting entities such as Sage; please contact our sales team to find out more about this option.

Vehicle & Stock Automatic Cost of Sales

Switching these on will post automatic journals for the cost-of-sale of parts and vehicles to help streamline your accounts and produce the monthly profit and loss much quicker than manual cost-of-sale procedures.

Sales Ledger

Pyramid-DMS Sales Ledger; create customers, straight text invoices, credits & receipts. Check transaction history, customer debt & compile statements. Configure a selection of reports - for example daily sales takings, sales invoice & credits or sales by centre. You can manage your nominal accounts and post a list of opening balances.

Purchase Ledger

Pyramid-DMS Purchase Ledger; create suppliers, post purchase invoices and split costs into multiple centres, take payments, check transaction history, supplier debt and compile a remittance advice report. Configure a selection of reports - for example purchase payments, purchase invoice & credits or purchases by centre. You can manage your nominal accounts and post a list of opening balances.

Nominal Ledger

Handles the final set of accounts. You can post expense & journal entries, run a trial balance, look at nominal history, perform a bank reconciliation, control financial periods and run profit and loss and balance sheets. It produces a full audit trail from the sales, purchase and nominal ledgers and incorporates a year end.

Customer Maintenance
Monday August 26, 2012
Customer ID: 3275 AIDEN NEWETT

Account Details: Invoicing Defaults | General Notes | Delivery | Trans History

Account Details
Account Group: ACC - ACCOUNTING
Account Name: David Philips
Address: 123 Test Street
Test City
Post Code: T35 3ST

Personal Details
Reference: Rto
Contact Name: david
Salutation: Mr
First Name: David
Last Name: Philips
Email: david.philips@gmail.com

Contact Details
Telephone No: 01752 36833
Fax No: 0123456789
Mobile No: 0741814221
Work No:
Contact Type: TEL - Telephone
Contact Source: CAT - undefined

Account Information
Balance:
Turnover:
Credit Limit: 0.00
Notes:

Apply Exit

Sales Ledger Receipts
Monday August 26, 2012
Customer ID: 8640 Open Theses

Allocated | Unallocated | Filter Options

Outstanding Transactions

Doc	Type	Description	Date	Amount	Balance	Payment	Discount
1000	SI	8640	18-08-2012	12.00	12.00	0.00	0.00
1001	SI	8640	18-08-2012	90.00	90.00	0.00	0.00
1002	SI	8640	18-08-2012	12.00	12.00	0.00	0.00
1003	SI	8640	18-08-2012	6.00	6.00	0.00	0.00
1004	SI	8640	18-08-2012	30.00	30.00	0.00	0.00
1005	SI	8640	18-08-2012	36.40	36.40	0.00	0.00
1002	SI	/	18-08-2012	120.00	120.00	0.00	0.00
1004	SI	/	18-08-2012	53.00	133.00	0.00	0.00
1005	SI	/	18-08-2012	182.11	182.11	0.00	0.00
1006	SI	/	18-08-2012	14.00	14.00	0.00	0.00

Comment:
Centre: 7000 - 7000 CASH
Date: 20 Aug 2012
Outstanding Balance: 476.52
Payment: 6.00

Post Cancel Exit

Key Features

- Sales Ledger
- Purchase Ledger
- Nominal Ledger
- Profit and Loss
- Balance Sheet
- Trial Balance
- Journal Entry Postings
- Bank Reconciliation

Marketing

Pyramid DMS Marketing ensures you are on top the game when it comes to marketing. We have created special reports and screens for large dealerships that need a sales manager overview to see how your sales team are performing. The email and SMS text features are a vital tool for reaching out to your customers and prospects for open weekends and special offers.



Bike Enquires

We have developed a bike enquiry system to record and store information regarding part exchange details etc. The enquiry overview system allows for a quick analysis of your enquiries which exports to excel. We have also linked this to your vehicle stock, and the moment a vehicle comes into stock matching your enquiry you are sent an email detailing the match!

Prospects

Stores prospect information including name, address, telephone, fax, email, website ect. Group your prospects into account categories to review all your contact information.

Contact

When making contact with your prospects record all the information here and set 'next-contact' dates for your contact due list.

Send Email, SMS Text

Create professional HTML marketing email campaigns and send them with a single click. SMS bulk-text your customers and prospects with sale and special offers.



Key Features

- Prospecting database
- HTML Email Campaigns
- SMS Texting
- Vehicle Enquiry System
- Marketing Reports
- Contact Management

Stock Control

The Pyramid DMS Stock Control module is packed with every thing you need to run a busy parts department, and with the vast integration into websites, eBay & Amazon sales platforms, Pyramid DMS will ensure things run efficiently, productively and using our management reports ensure you are not wasting time. We have extensively developed integration with eBay and e-commerce websites and all the

information you require to link with your website & eBay store are included. Your eBay shop and store categories are available to choose from within Pyramid and with a click of a button you can list your items onto eBay and your website. Once synchronized to these sales platforms, Pyramid stock control can un-list your items when the stock has run out and automatically import the orders and create the customers.

Products & Product Categories

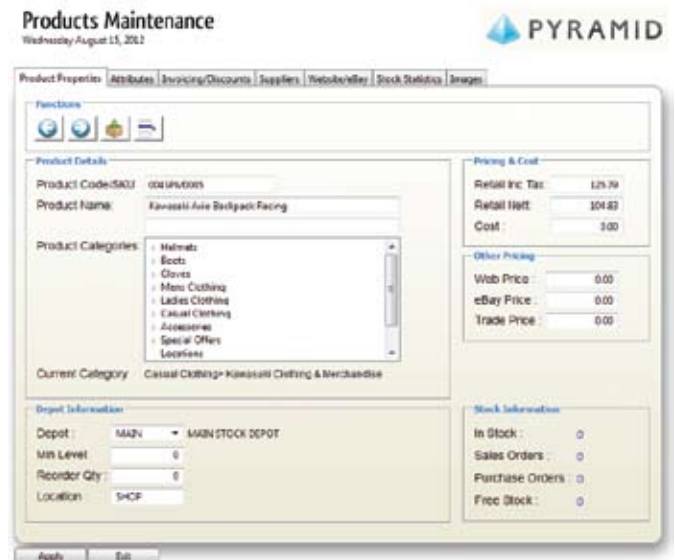
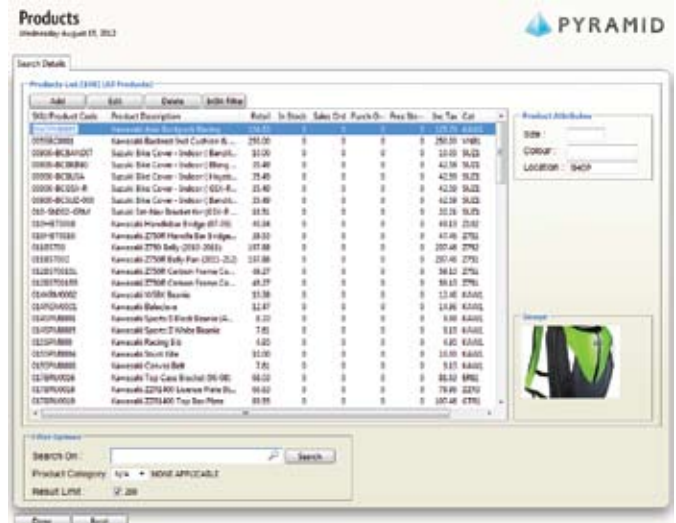
Selling products is fundamental to the success of your business and organising them properly is crucial. From the main product list screen you can quickly see what items are in stock with columns including SKU, retail price, stock level, sales or purchase orders, free stock items, and the tax inclusive price. Click on an item and you are taken to the Product Maintenance system. This is the central area for storing data, including comprehensive product properties, attributes, description any related discounts and supplier information with options to check stock statistics and load images.

Stock Take, Adjustments & Purchases

You will often have to make stock inventories and adjustments. You can enter multiple SKU's to receive or un-receive a number of items at the same time. You can print an new order, print labels or export a spreadsheet to Excel so you can analyse the current stock movements. You can also easily check your stock history and also export this to Excel. The stock take screen has a good search facility and lots of filters to help to complete a sometimes stressful job.

Point of Sale, Counter Invoicing & Stock Discounts

The system has a POS screen that is clear and easy to navigate making sure you can quickly complete the most important part of business - selling products! Scan the items from a bar-code or use the look-up search facility to locate your items. This will produce a small printed receipt for a quick sales. Counter Invoicing is for a more comprehensive and a full invoice, detailing discounts, VAT break down, delivery address and full SKU description.



Key Features

- Products
- Product Categories with multiple levels
- Stock Take
- Stock Adjustments
- Point of Sale Invoicing (quick)
- Stock Invoicing and discounts
- Reporting

Vehicle Sales

Pyramid DMS Vehicle Sales module has several features that will help your sales team to manage the data associated with making and tracking sales. The stock book allows you to see at a glance what bikes you have for sale in which locations and at what prices. The order book helps you create orders for complex transactions like part-exchange deals.

The biggest help will be the e-commerce listing features. Here we have worked hard to develop a system that can save you a huge amount of time listing lots of items on multiple e-commerce platforms like your website, MCN and eBay, centralising and minimising your listing procedure.

Vehicle Stock Book

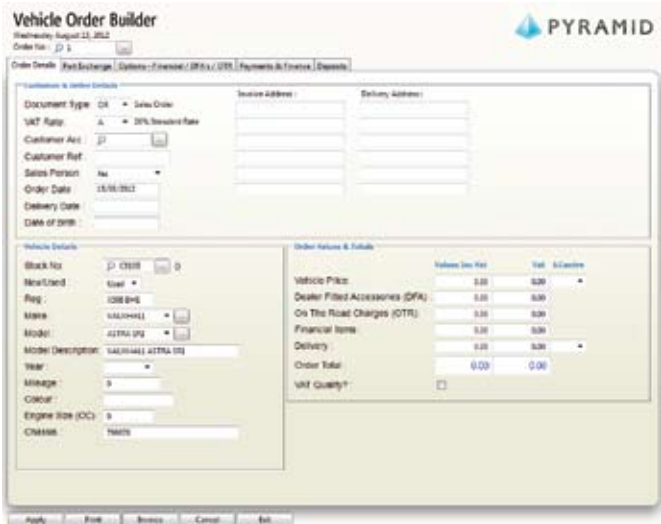
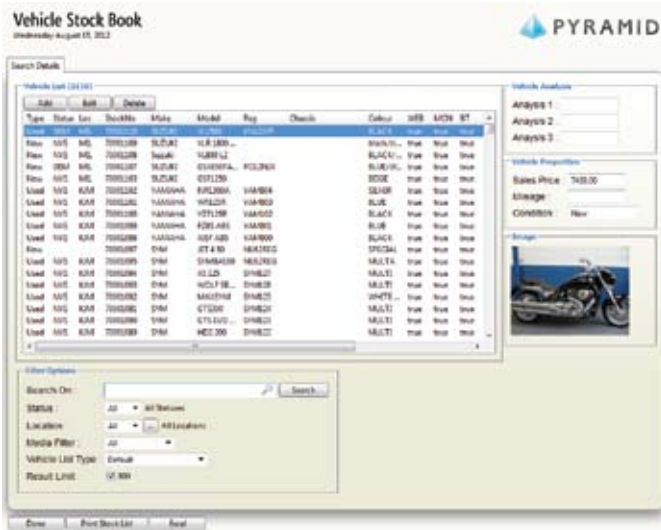
The easy to navigate vehicle stock book stores all your vehicle information for review. You can easily filter vehicles by "In Stock", "Sold", "On Order" & "Part Exchange" and cross reference by multiple location or sales person and the screen has a handy global search box for all fields on the vehicle record (Reg, Chassis, Colour etc). Double click on a vehicle and you are taken straight to the Vehicle Maintenance system so you can manipulate and modify the data associated with the bike.

Vehicle Order Builder

Use the comprehensive order building system to easily create orders, quotations and invoices. PYRAMID-DMS can handle complicated part exchange and finance deals. You can select extras like dealer fitted accessories and OTR charges associated with the bike. Finally, include any deposits or down payments and you are ready to print the order and/or invoice and apply the deal to the system, automatically updating your stock and accounts.

Integration

MCN, eBay, BikeTrader, and Website integration are easily achieved by simply adding your images, sales text, price and select the relevant applicable sales platform. Then overnight all of your vehicles are listed onto MCN, eBay, Autotrader and your website! Pyramid also makes sure the right platform gets the right data ensuring your bikes are listed. Sold vehicles are automatically unlisted. This integrated approach to listing and un-listing sold vehicles will save your sales team hours of labour because they only have to upload a vehicles information into Pyramid once instead of four times, for each sales platform.



Key Features

- Vehicle Stock Book
- Store Multiple Images
- Multi-Image Uploader
- Vehicle Order Book
- Multiple Part Exchange
- Finance
- Excellent Reporting
- Links to MCN, eBay, BikeTrader & your website

Order Management

Pyramid DMS Order Processing module helps control all of your sales and purchase order requirements. Produce picking lists, delivery notes, invoices, credit notes, GRN (Goods Receive Notes) and print stock labels easily with the click of a button that will ensure orders are picked and packed efficiently to help maintain a high level of customer satisfaction. There are extra fields for tracking numbers and order notes that can be printed onto the invoice for extra information.

Sales Orders

Store multiple orders for a client, print picking lists, delivery notes, invoices and credits. Backorder out-of-stock items. Use the special backorder tab on the order screen to see all relevant details concerning the status of the order, very useful when customers are chasing their items.

Purchase Orders

Create and book your stock in using the Purchase Order System. Print a GRN including any backorder information to streamline the process. Print stock labels and purchase orders to PDF and/or export to Excel.

Order History Reporting

Completed orders are stored in a separate historic order table so you can easily access this information at a later date.

Stock Back Orders

When items are backordered they land here for processing into a purchase order. You can pull up the SKU Information, Supplier Information, Sale History and add subsequent SKU's to the order. A single click creates the order and moves the items out of this control.

Select	Tr	Stat	Status	Order No.	Account Name	Reference	Order Value	Order Date
<input type="checkbox"/>	OR	ESY	SA	1023	Tony Martin	30275	41.96	03/06/2012
<input type="checkbox"/>	OR	ESY	SA	1021	David Bourne	30276	-8.20	04/06/2012
<input type="checkbox"/>	OR	ESY	SA	1020	Ben Kightley	30279	47.40	04/06/2012
<input type="checkbox"/>	SC	ESY	SA	1029	Jan Donlon	30279	14.13	04/06/2012
<input type="checkbox"/>	OR	ESY	SA	1025	Michael Valentine	30280	12.25	04/06/2012
<input type="checkbox"/>	OR	ESY	SA	1027	andrew cresswell	30281	14.13	05/06/2012
<input type="checkbox"/>	OR	ESY	SA	1026	Asy Matthew Pales	30282	15.34	06/06/2012
<input type="checkbox"/>	OR	ESY	SA	1025	Sally Davis	30283	8.31	06/06/2012
<input type="checkbox"/>	OR	ESY	SA	1024	sharon corbin	30284	8.31	06/06/2012
<input type="checkbox"/>	OR	ESY	SA	1023	David Taylor	30286	40.00	06/06/2012
<input type="checkbox"/>	OR	ESY	SA	1022	mark bowcott	30285	8.31	11/06/2012
<input type="checkbox"/>	OR	ESY	SA	1021	Philip Osborne	30287	14.75	13/06/2012
<input type="checkbox"/>	OR	ESY	BAC	1020	Stuart Harrison	30289	20.65	21/06/2012
<input type="checkbox"/>	OR	ESY	BAC	1019	Bhupinder Singh V.L.	30290	11.40	21/06/2012
<input type="checkbox"/>	OR	ESY	BAC	1018	sami nikala	30291	4.00	21/06/2012
<input type="checkbox"/>	OR	ESY	HEV	1017	Hayley Stapleton	30290	8.15	11/05/2012
<input type="checkbox"/>	OR	ESY	HEV	1016	Mick Travers	40291	0.00	11/05/2012

SKU/Product Code	Product Description	Qty	Unit Value	Total Value	Received	Invoiced
712041	Ybtl-S - XB Litr Avc: Acide 1	2.00	50.00	100.00		
12420	SM64 BCOITS	3.00	81.24	243.72		

Key Features

- Sales Orders
- Purchase Orders
- Stock Back Orders
- GRN (Goods Receive Notes)
- Picking Lists
- Delivery Notes
- Invoices and Credit Notes
- Order Reports